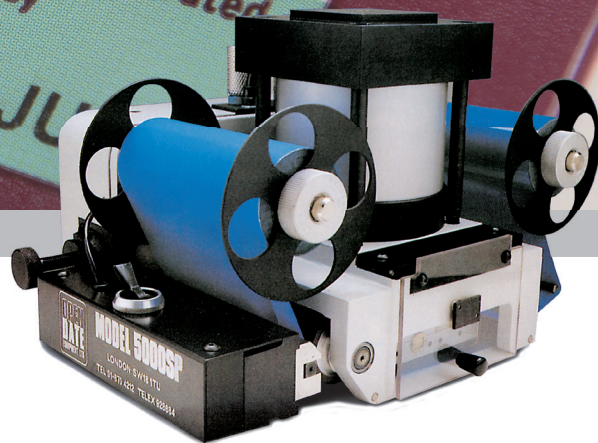


# 5000 SERIES

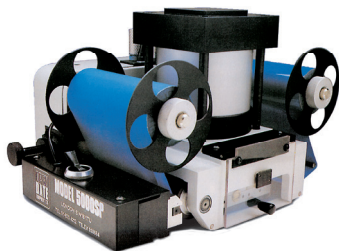


## HEAVY DUTY AND LONG-LASTING RUNNING

The Open Date 5000 Series of automatic hot foil overprinters are high quality, heavy duty machines. They are designed to be attached to reel fed packaging machines to provide a large area on-line printing facility for logos graphics, dates and bar codes.

## MULTI-LANE PRINTING

Given their large print area, 5000 Series printers can also span multiple lanes on sachet and labelling machines enabling a single printer to be used instead of one smaller printer per lane.



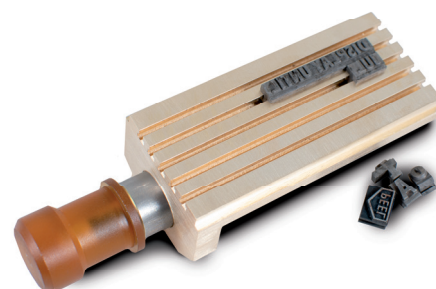
## STANDARD DISPLAY

The 5000's digital display controller enables simple yet precise control of print dwell times and operating temperatures to provide the optimum print quality. It features indicators for end of foil, heater failure and temperature sensor failure.



## TYPE HOLDERS

The 5000 series uses slide in type holders which utilises steel and brass type, rotary numbering units for user changed data and printing dies for logos or graphics



# MAIN FEATURES



### ACCURATE

- Up to 100 prints per min.
- Fully variable temperature control
- Digital electronic control unit
- integral solenoid valve
- Can span multiple lanes



### QUALITY

- Unsurpassed print quality
- Easy to install on packaging/label machines
- Precision engineered design
- Slide in type holder including lock

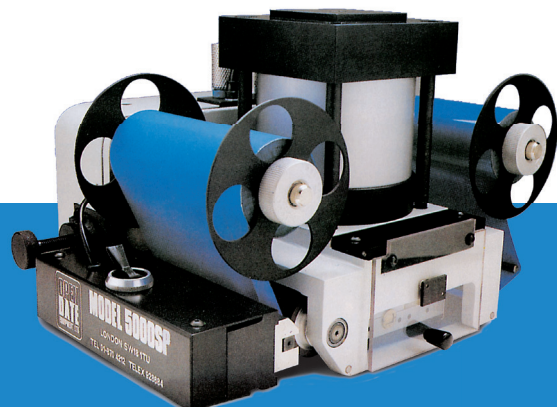


### INTELLIGENT

- Positive foil drive with infinite adjustment
- Dwell times of up to 650 milliseconds

HOT FOIL RANGE /

# 5000 SERIES SPECIFICATIONS



## 5000S 5000SP

Print area	150 x 50mm (5.91" x 1.97")	150 x 100mm (5.91" x 3.94")
Operating speed - maximum	100 per minute	100 per minute
Main air cylinder	75 Ø x 13mm (2.95" x 0.51")	125 Ø x 13mm (4.92" x 0.51")
Print head dimensions	396(L) x 232(W) x 330 mm(H) (15.59"(L) x 9.13"(H) x 12.99"(H))	435(L) x 259(W) x 335 mm(H) (17.13"(L) x 10.20"(H) x 13.19"(H))
Print head weight	18kg (39lbs)	23kg (50lbs)
End of foil alarm	Optional	Optional
Foil capacity	305m (1,000ft)	305m (1,000ft)
Foil width - maximum	165mm (6.5")	165mm (6.5")
Foil feed adjustment	Infinitely adjustable	Infinitely adjustable
Operating air pressure	4.0 to 6.8 bar (60 to 100 PSI)	4.0 to 6.8 bar (60 to 100 PSI)
Dwell time range	12-650 milliseconds	12-650 milliseconds
Temperature range	Variable 70 to 220 °C	Variable 70 to 220 °C
Operating voltage	100/240v AC, 50/60Hz	100/240v AC, 50/60Hz

IDEAL SOLUTION FOR.....



FOOD &amp; BEVERAGE



PHARMACEUTICAL



COSMETICS



OTHER



Close to fifty years the Open Date Group has been a world leader in the innovative design and manufacture of On and Off-line Coding, Marking and Overprinting systems for use on most kinds of flexible packaging materials and labels. We believe each product should be developed with the customer in mind and manufactured to the finest engineering standards possible. Our aim is to use our experience and engineering skills to provide equipment that is fit for purpose, reliable, minimises down time and is easy to use. In order to be the best solution provider to suit your needs we offer a comprehensive range of Hot Foil and Thermal Transfer overprinting systems with Debossers and Carton Feeders coupled with first-class installation and after sales service, as well as consumables.

Our products are designed and manufactured in the UK with wholly owned operations in the USA, France, Germany and the Philippines and a strong network of resellers and agents all over the world. We have confidence in providing you support all over the globe.

[www.opendate.com](http://www.opendate.com)

**Open Date  
Equipment Ltd.**  
Unit 9 Puma Trade Park,  
145 Morden Road,  
Mitcham, Surrey, CR4 4DG  
**United Kingdom**  
Tel: +44 (0) 20 8655 4999  
Fax: +44 (0) 20 8655 4990

Email: [sales@opendate.co.uk](mailto:sales@opendate.co.uk)

**Open Date  
Systems, Inc.**  
Springfield Road,  
PO Box 538  
Georges Mills, NH 03751  
**U.S.A.**  
Tel: +(1) 603 763 3444  
Fax: +(1) 603 763 4222  
Toll free: 877-OPENDATE  
Email: [info@opendate.com](mailto:info@opendate.com)

**Open Date  
France**  
Z.I. D'Attichy  
60350 Attichy  
**France**  
Tel: +33 (0) 344 42 94 43  
Fax: +33 (0) 344 42 17 17

Email: [info@opendatefrance.com](mailto:info@opendatefrance.com)

**Open Date  
GmbH**  
Mittlere Stämmig 4  
97297 Üttingen  
**Germany**  
Tel: +49 (0) 9369 98 24 0  
Fax: +49 (0) 9369 98 24 24

Email: [info@opendate.de](mailto:info@opendate.de)